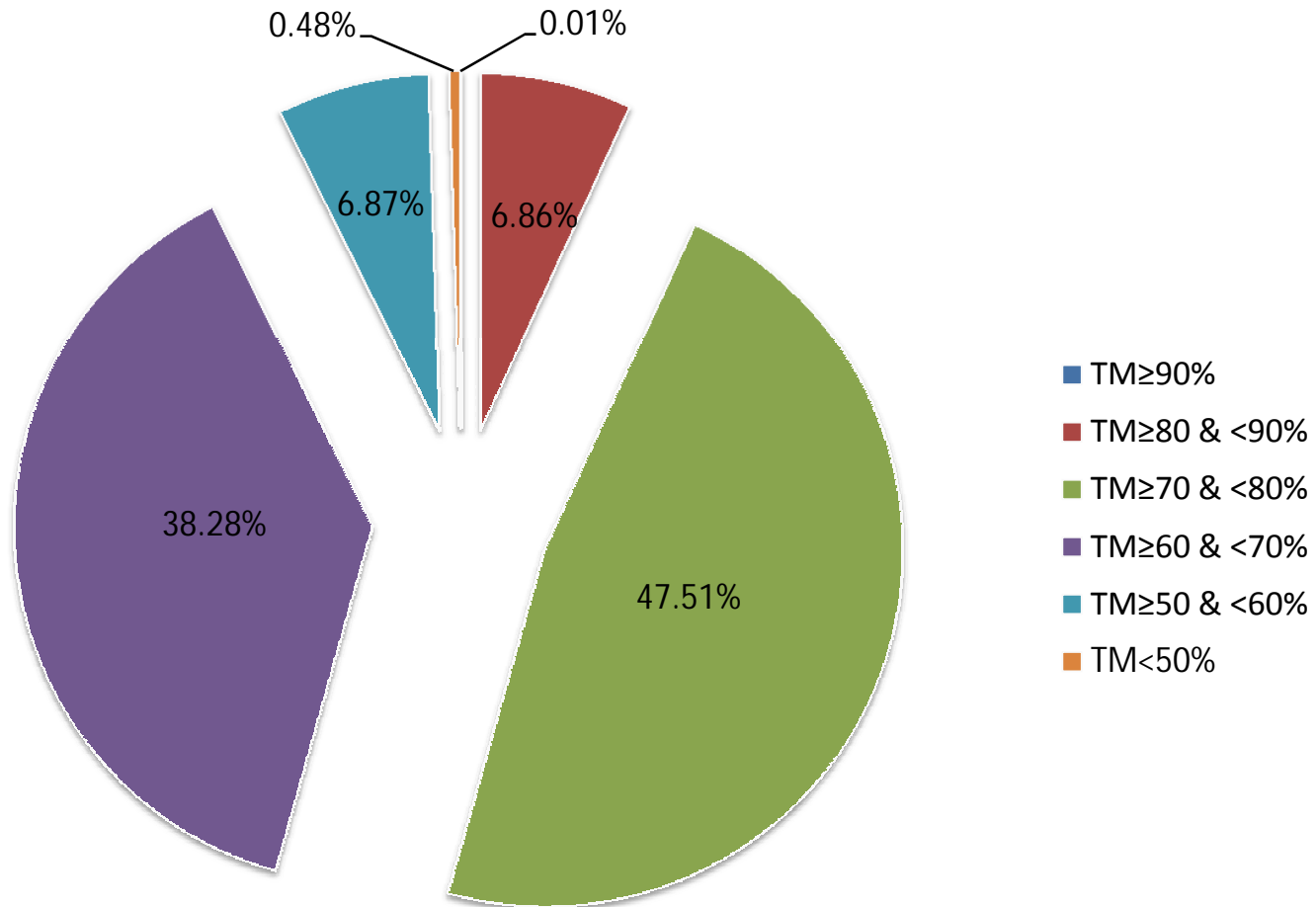
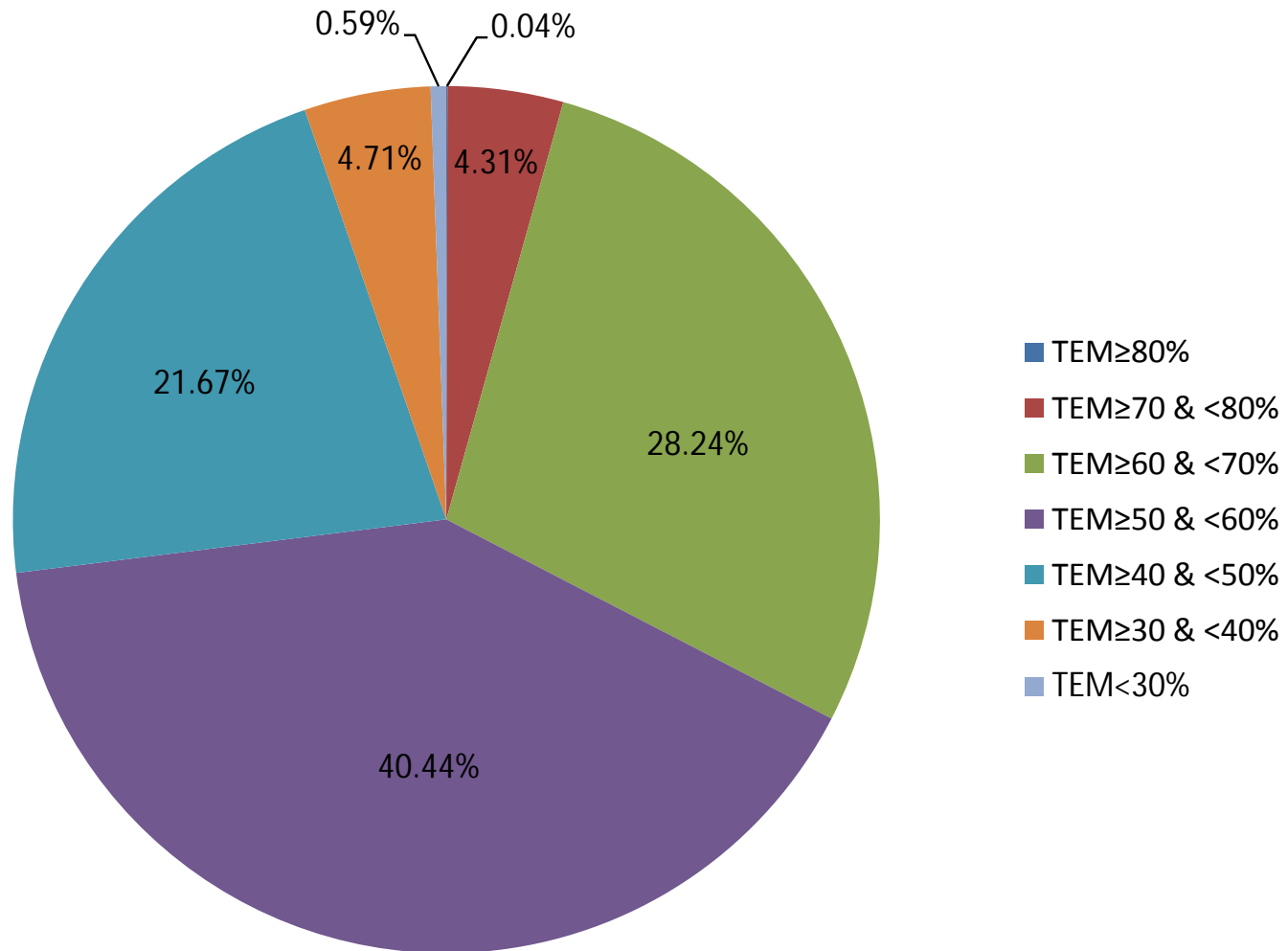


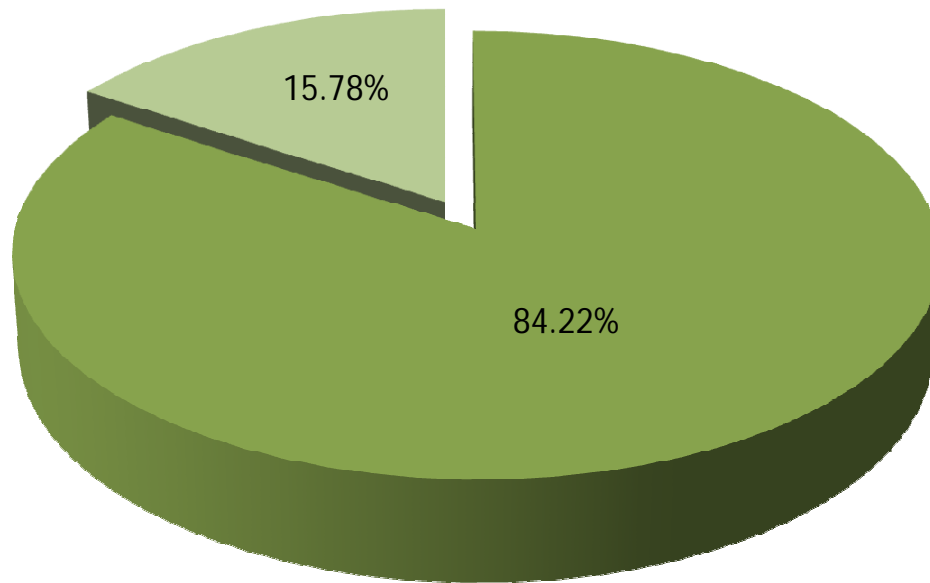
Break up of B.Tech. VII Semester Students Based on Total Marks (TM) Obtained (2016-17 Odd)



Break up of B.Tech. VII Semester Students Based on Theory ESE Marks (TEM) Obtained (2016-17 Odd)



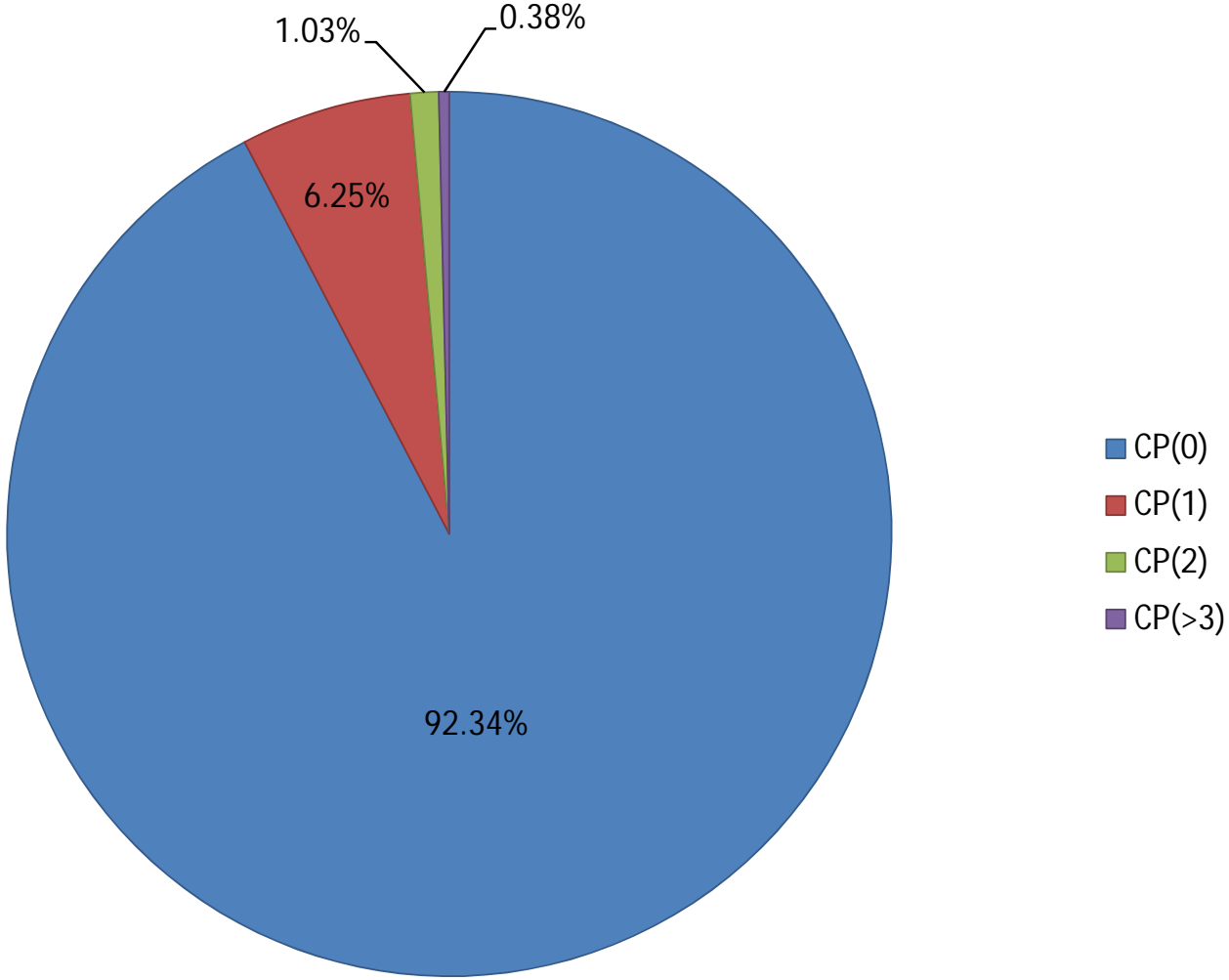
**Break up of B.Tech. VII Semester Students Based on Theory
Sessional Marks (TSM)/ TEM Ratio (2016-17 Odd)**



■ TSM/TEM \leq 1.8

■ TSM/TEM $>$ 1.8

Carryover Paper (CP) Wise Break up of B.Tech. VII Semester Students (2016-17 Odd)



Total Number of Students = 48,531