



(Following Paper ID and Roll No. to be filled in your Answer Book)

PAPER ID : 181204

Roll No.

--	--	--	--	--	--	--	--	--	--

B. Arch.

(SEM. II) THEORY EXAMINATION, 2014-15

ARCHITECTURAL DRAWING-II

Time : 3 Hours]

[Total Marks : 100

- 1 Draw a Two point perspective of the object shown 40
in Fig. 1

OR

- Draw a One point perspective of the object shown 40
in Fig. 1.

(Fig. 1 printed in separate sheet)

- 2 Draw An Isometric or an Axonometric view of 20
the object shown in Fig. 1.

- 3 Show the Sciography in plan and on elevation of 20
the objects shown in Fig. 2.

(Fig. 2 printed in separate sheet)

- 4 A vertical cylinder 80 mm dia. is pierced by a horizontal square
prism, Base 50 mm side, the axis of which is parallel to the
V.P. and 20 mm away from the axis of the cylinder. One
face of the prism makes an angle of 30° with the h.p, show
curves of intersection by drawing projections.

OR

- 4 A vertical cylinder of 50 mm dia and 80 mm height is standing on its base on H.P. It is penetrated by a Pentagonal prism of 24 mm side and 80 mm length such that one of its rectangular faces is parallel to V.P and farther away from it. The axes of solids intersect at right angle with no off set

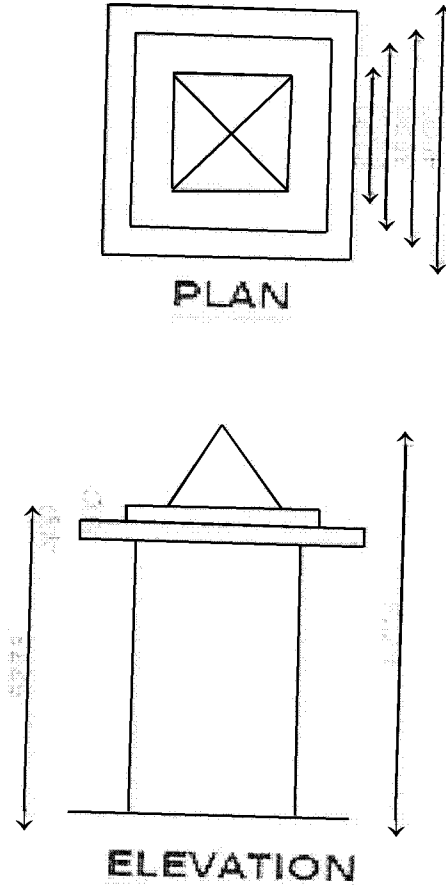


Figure:1

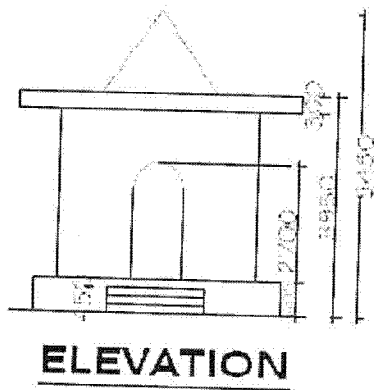
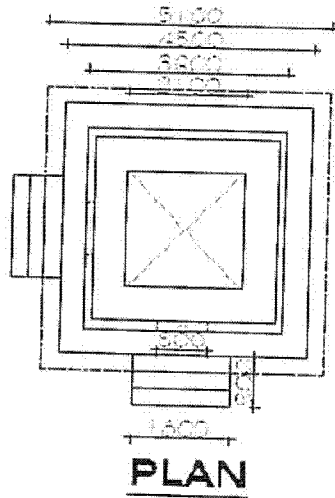


Figure:2